

Projet 5

Eco-tourism project for Rufiji
Tanzania

4^{ème} Prix du Développement Durable
Touristique
2004

contact kisomam@yahoo.co.uk

THE PROPOSED RUFJI RURAL TOURISM PROGRAM-ASYNOPSIS:

- (i) Introduction Background
- (ii) Program
- (iii) Objectives
- (iv) Tourist Attraction Sites
- (v) Program Strategy and Plans
- (vi) Tours and Activities
- (vii) Conclusion and Recommendation
- (viii) Bibliography

(i) INTRODUCTION

Tanzania, covering 937062 square kilometres is situated on the east coast of Africa and lies between South of the Equator. It borders Kenya and Uganda in the North; Democratic Republic of Congo, Rwanda and Burundi in the West; and Zambia, Malawi, Mozambique in the South. The country embraces the Islands of Pemba and Zanzibar which together occupy an area of 2,614 square kilometers. Further south of Zanzibar is the Mafia Island in the Indian Ocean.

The major part of wealth of the country comes from agricultural products. Major crops for export being coffee, cotton, tea, tobacco and pyrethrums. Export of minerals such as gold, diamond, tanzanite, etc also contribute a lot to the economy. Light industries are increasing rapidly. The main industries being of Textiles manufacturing, foodstuffs processing, leather goods production and building materials. Tourism industry is now gaining momentum. It's contribution to the economy show an increasing trend from USD 13.4 million to USD 139 mill in 1970 and 2000 years, respectively. With careful planning development and mobilization, tourism industry is likely to be the legs of Tanzanian economy in the near future.

Rufiji District is located in the south of Coast Region along the east coast of Tanzania between 37° 30'E to 39° 30'E (Longitudes) AND 7° 30'S to 8° 20'S (Latitudes). The Western and Southwestern parts of the District are significantly occupied by the Selous Game Reserve - The Tanzania's untouched wilderness. The District is generally flatland with occasional hilly landscape in the North and South of the Rufiji River Basin. The Giant Rufiji Delta is the home of Mangrove forest Reserve extending over 60 kilometers from North to South of Rufiji Coastal strip. Here the mighty Rufiji River enters the Indian ocean majestically in undulating tributaries. Where the river tributaries meets the Indian ocean lies the breeding grounds for prawns, with the Rufiji Delta prawns being one of the best prawns in the world. Dima and Simbaulanga Islands are located in this area

overlooking Mafia Islands in the far eastern site of the ocean. In the mainland sit of the District, the wildlife and forests of Miombo woodlands, Savannas and thorny bushes are predominant.

The Economy of Rufiji is mainly Agriculture-rice, maize, cashew nuts, being chief crops. Tourism is a new concept to people in this district. Despite the fact that few private people have been owning camps and have been receiving tourists. Fortunately the District council have already endorsed this program as being the local government program for the district. This program is regarded as a substitute economic activity that will prevent people from further destruction of forestry, wildlife and marine resources in this District.

(ii) PROGRAM BACKGROUND

The idea to embark into this program was conceived by the local people themselves in year 2002 following awareness meetings by Mkongo-Mloka Development Association and the various village governments.

The village government had authorized the Mkongo-Mloka Development Association to develop this idea into a full project/program for implementation on their behalf. Consequent to this authorization is the proposed Rufiji Rural Tourism Program - RRTP now under development. The program was due to take off officially in August 2004. Unfortunately due to delays in completing some important tourism infrastructures, we have shifted the take off stage to early next year.

Mkongo-Mloka Development Association is the largest Non-Governmental Organization with more than 15,000 members in more than 3000 groups. This figure represents about 10% of the total population in the District. The members represent the population engaged in various economic activities such as Agriculture, fishing, hunting, carpentry, petty food processors, logs cutter, beekeepers, etc.

This organization was officially registered in 1996. It's headquarters are at Kipo village in Rufiji District and secretariat office at Dar es Salaam, Tanzania.

The main objectives of this organization among others are:

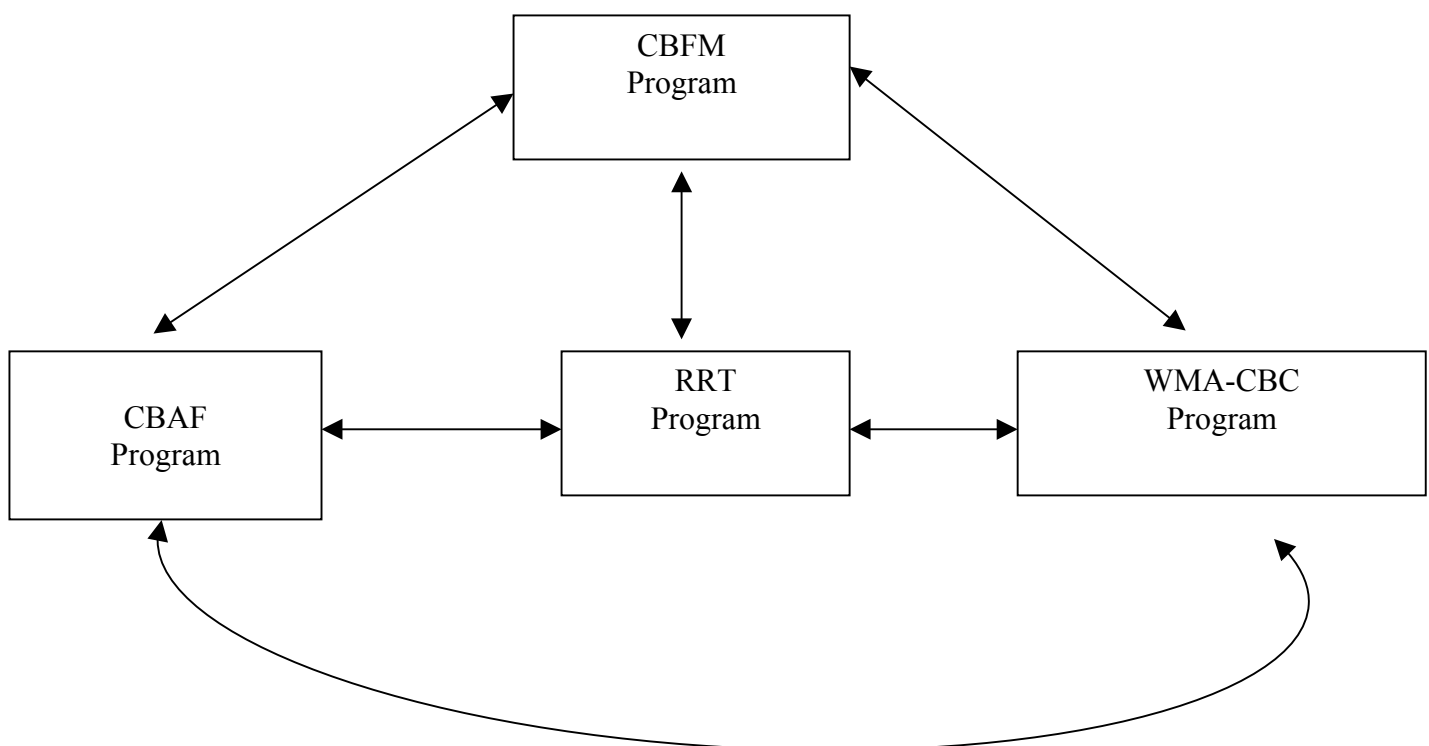
- (i) Motivating and empowering people to, engage into development activities.
- (ii) Poverty alleviation education provision and diseases fighting
- (iii) Agriculture, Fishing development and environmental protection activities
- (iv) Rural tourism promotion and management of natural resources.

To date, Mkongo-Mloka Development Association has managed to prepare other

Sister programs parallel to this program which are:

- (i) Community based artisan fishing program (CBAFP)
- (ii) Wildlife Management Area under community based conservation (WMA-CBC)
- (iii) Community forest management Rural program. So extension of capacity building assistance to this program automatically means extending this assistance to this sister programs.

Diagrammatic Illustration:	of Program for Rufiji under MMDA
----------------------------	----------------------------------



(iii) Program Objective:

Two types objectives can be distinguished in as far as this program is concerned. The long-term objectives and the shot term objectives.

The Long-term objective is:

Poverty alleviation to communities through sustainable use and conservation of environment and available nature resources.
--

The immediate objectives *inter alia* include:

- (a)

Development of Rural tourism for communities in Rufiji District within 36 months effective, July 2003.
--

- (b) Encouraging Community Based Environmental conservation as well as sustainable use and conservation of wildlife resources, Marine resources and forestry resources through tourism activities in Rufiji District within 36 months effective July, 2004.

Program Objectives (continue)

- (c) Employment creation and income generation to communities in Rufiji District through tourism activities within 36 months effective July, 2004

- (d) Culture Preservation and development through tourism activities in Rufiji District within 36 months effective July, 2004

iv Tourist Attraction sites

- 1 - RUARUKE is a village in which the famous KIITA HILL and KALEMIE cave are located. The word KIITA is tradition in origin and mean CALLING or OBSERVING. The Kiita Hill is the last piece of an upland prior to arriving to the sea level land. One at Kiita Hill can observe far down to the ocean as well as far up to the mainland. Because of this feature, this Hill was used by the German Troops as an "observation and communication post" during the world war II against the British troops stationed in Mafia Island. Down the Kiita Hill is the Karemie Cave believed to be used by the same German troops as a "Hiding place".

The Kiita Hill area and the Karemie cave is surrounded by a forest of short trees, grassland and water streams.

Animals like: Lions, Pigs, Monkey, Snakes and other small animals and insects can be seen in the area.

The lion and the Giant snakes seen occasionally in this area are believed to have "spiritual significance traditionally" the area is earmarked as "Potential picnic camping site" using portable tents. It is accessible by motor vehicle variable 1 and 3 from Dar es Salaam. It takes about 2 and a half hours drive by motor vehicle from Dar es Salaam. In future, Traditional Dungu lodges will be built to provide permanent accommodation to visitors. People here are friendly and loving as such home stays can be arranged upon request.

- 2 - NYAMISATI is small port village located along the banks of HOROBANIAN river which is one of the big tributary of the Rufiji River entering the Indian ocean. It is about 20 minutes drive by motor vehicle from RUARUKE. One of Mangrove conservation office is located here. Two hostels are available for immediate accommodation needs. One hostel belongs to the free Pentecostal church of Tanzania (FPCT) and another one belongs to the District Council. There are two dispensaries here. One being governmental owned and another being FPCT owned. There is also the Malaria research center here. Places for camping sites using potable tents are available about 1 and a half-kilometer from the village Kisiwani area. This port is a gateway to Mafia Island, Dina Island, Simbaulanga and other puts of the Rufiji Delta. The communities here play major role in Mangrove conservation activities. They also played a leading role in protecting the prawns breeding areas from being destroyed by the African fishing company. At Nyamisati one gets insights into the natural beauty of the Mangrove forests and the wonders of the Rufiji Delta. People here are friendly and loving. Home stays can be arranged upon request. In the mainland site forest, lions and elephants can be seen during the night. Adventurism and researchers are welcome

RUARUKE - KIITA HILLS



- 3 - SIMBAULANGA ISLAND is a village located at the north of Rufiji River between Horbanian and Simbaulanga tributaries. The communities here also play a major role in mangrove conservation and use. Other activities are fishing and coconut selling. The Island is mainly covered by Mangrove vegetation on the western side and coconut plantations on the eastern side. The eastern and Northern side of this Island is occupied by the beautiful sand beach stretches - making it ideal for picnic camping sites" using portable tents. At Simbaulanga Island just like at Nyamisati, Fresh water from the mighty Rufiji River meets with Marine water of the mighty Indian Ocean. The Island is accessible by boat only its is about 1 and a half hour Travel by motorboat powered with 25HP engine.

SIMBAULANGA ISLANDS



- 4 - DIMA ISLAND is a village located on the western site of Mafia and Bweju Islands about 2hrs drive by a motorboat powered by 25HP engine (when the ocean is calm). It is about 5hrs drive by motorboat powered by 25HP engine from Nyamisati (when the ocean is calm). Dina is famous for its contribution in mangrove conservation and trade known, as GEORGE-KUCHI was located here way back in the 1950s. This activist together with the communities of Kiasi and Kyechuru and Mbwera carried the conservation efforts mean while facilitating trade. The Island contains beautiful sand beaches on its Northern and eastern side. The western side is occupied by mangrove forest. Fishing activities and traditional spiritual activities are also under taken here. The word Dina is traditional in origin and literally means “work or Busy”. The Island is ideal for development of tourist lodges and classical Hotels. Meanwhile camping sit using portable tents can be done. Home stays can be arranged at Kiasi and Kyechuru.

DIMA ISLANDS



- 5 - IKWIRIRI is a small commercial and busy town. It is located on the Northern site of River Rufiji along the famous KIBITI LINDI HIGHWAY. The town has communication facilities, advanced dispensaries and Health centers, guest Houses and bars and transit camping sites over the Northern banks of Lake Umwe. Communities here have been charged with the duty of conserving the famous NGUMBURUNI COASTAL FOREST RESERVE and lake Umwe. The famous MKAPA BRIDGE 1.5kms long is located about 9kilometres south of Ikwiriri and about 7 kilometres North of Nyamwage village. Home stays can be arranged at ikwiriri upon request. It is a transit point for a one traveling to North Ngorongo, WMA and North Mwaseni WMA as well as inside the Selous Game reserve, through Mloka village. (hippos and crocodile seen assoil Rufiji River.

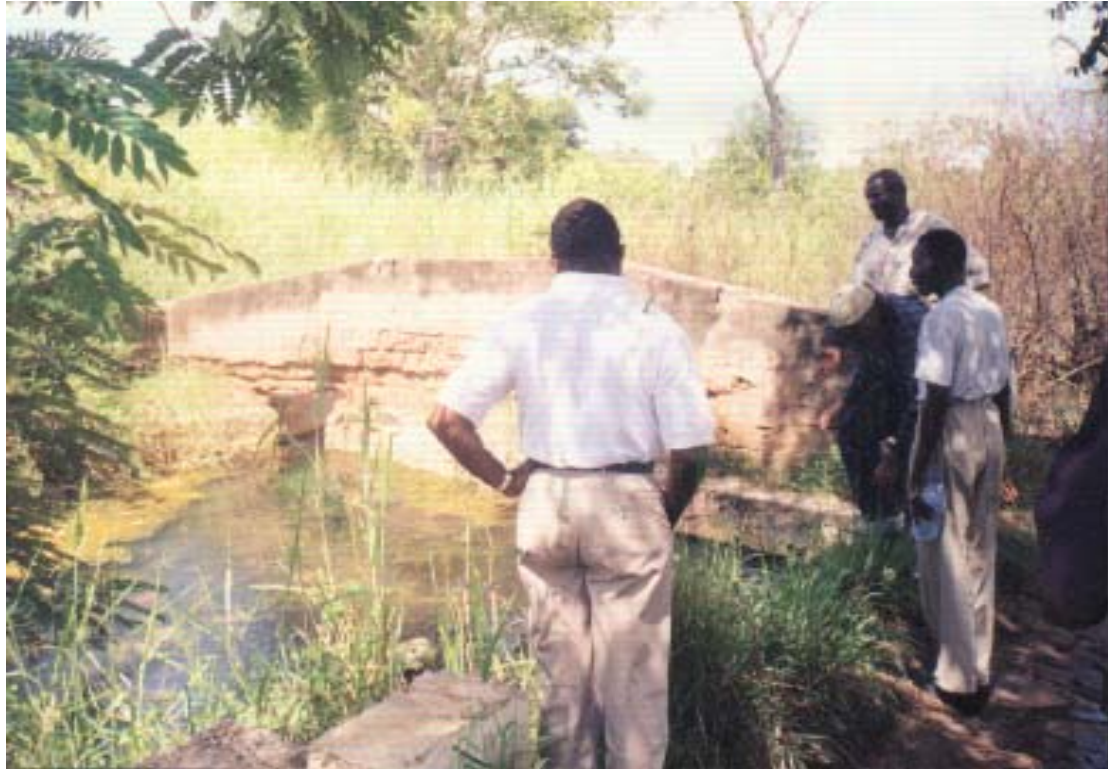
MKAPA BRIDGE



- 6 - NYAMWAGE is a small transit village. Contains a small dispensary, one guesthouse and bar. The Lubinda forest reserve on the way of Mbwara village once cared by WWF is located near this village about 20 minutes drive by motor vehicle. The forest is endowed with water streams and wildlife. From here one can access Utete by a motor vehicle in 1hr. tent camping sites can be arranged in the Lubinda forest.
- 7 - UTETE is the capital of Rufiji District. The old German Boma can still be seen now. The local garment uses this building as its offices. The Boma is believed to have underground escape routes leading to the Rufiji River. Utete is a stone - town. The famous Nyakubera Hot spring is located here

on the eastern side of the town. The Main District is located here the town has small guesthouses, bars, camping sites at Nyakubera and the banks of lake Lugongwe. Dungu lodges will soon be built.

SPRING -UTETE



From Utete one can access Kingupira hunting camp; South Ngorongo WMA under Community based conservation hunting block at Libala, Kitondole Lake Utunge and Mtarula. One can also access south Mwaseni WMA - under community-based conservation hunting block at Mpanga, Kibonge and Mkindu. Beyond these WMA - CBC areas is the mighty selous Game Reserve. The areas are accessible by 4WD motor vehicles during dry season only. Appropriate months to visit Kingupira, Ngarambe, South Ngorongo and South Mwaseni WMAs - CBC are July to December. The hunting permit can be obtained at Utete wildlife areas is about 1hr to 3hrs drive. Community game scouts and tour guides are available.

The vegetation is mainly of Miyombo woodland and Savanna. Animals like Lions, elephants, zebras, buffaloes, antelopes, waterbucks, hippos, crocodiles and variety of bird's species can be seen. Hunting camping sites have already earmarked meanwhile portable tents are in use. Late on the traditional Dungu lodges will be built. Home stays can be arranged upon request.

- 8 - KIPO is the head office of Mkogo - Mloka Development Association. It is located at the center of Ngorongo ward in which North Ngorongo WMA-CBC is located.

The memorable Majimaji Rebellion in Rufiji between natives and the Germans from 1905-1906 ended here. The Mkongo tree pierced by Germany guns bullets can still be seen, the few German soldiers graves can still be seen, as well. The Mysterious Lake Zumbi is located here. Accommodation can be provided by MMDA Dungu lodges and camping sites at Ngosa camp. Community groups camping sites are also available. From here one can get access to North Ngorongo as well as North Mwaseni WMA-CBC under the gasp-ices of village game scouts and tour guides. The terrain is mainly flat, accessibility is appropriate during the months if July to December.

In the hunting blocks, such animals like lions buffalo elephants, zebras wild pigs antelopes, water backs, giraffes, monkeys etc. can be seen

The endangered red colobus monthly have been spotted near Nyaminywili. The wildlife management areas also contain forest reserves such as Mtawa forest reserve, Kipo forest reserve, Ruhui forest reserve etc.

With community based Tourism activities in the go, Parching bush burning and uncontrolled logs cutting will come to a stand still.

Program Strategy and Plans for Implementation

Strategy:

- In implementation this program eight routes (ie 1-8) and nine gates (ie a - I) has been identified for the purpose of accessing the eight community based tourist attractions in Rufiji.
- Through gate (a) that is at Jaribu Mpakani village tourists can access Kiita Hills and the kalemie Cave at Ruaruke; Mangrove forest reserve, officer at Nyamisati; beautiful sand beaches at Simbaulanga and Dima islands as well as classical tourist hotels at Mafia Island via route 1. Tourists arriving Mafia island by air can opt to make a tour of the Rufiji Delta Attractions through route 2 by motorboats to Nyamisati and then taken a short bridge and then take a short drive to Ruamke. From Ruanike, tourism can access Mkapa bridge at Ikwiriri the Lubinda forest reserved at Nyaruwage/Mburata area via ra
- From Ikwiriri, tourist wishing to access Wildlife Management areas under community based conservation (WMAs-CBC) embark rout 4 up to Kipo village-the headquarter of MMDA for further instructions. Those proceeding to Utete hot spring. Wildlife Management areas under community based conservation in South Ngorongo and South Mwaseni, Ngarambe and Kichi Hills for panoramic view of Rufiji River basin should stick to route 3 beyond Mkapa Bridge. Tourist arriving in the selous game reserve by air through Kisasi in Morogoro and wish to access Rufiji

tourism circuit can do so by either taking motor vehicles through gate (d) at Mloka village a gate ii) at Mpanga and then follow either route 4 or 3, respectively. They can as well opt to take motorboats to the same gates or either proceeds to Kipo village or Utete township via rout

- 9 - Tourists arranging from Kisarawe can access the mainland tourist attractions through gate (c) and (b) at Msigani camp and Kongo and then via route 5, 6 and 4 tourists arriving from the southern.

Regions of Lindi and Mtwara or even Mozambique by motor vehicle can access the Rufiji tourists sites via voute 3 through gate (h) at Muhoro village. Tourists can also access the southern mainland attractions via route 8 at Utete or Kingupira (Ngarambe) by chattered pans. Tourists can get assistance or any other useful information at various tourist gates or at MMDA headquarters at KIPO VILLAGE or at Utete the district government headquarter.

Implementation strategy involves the community groups on the one hand and the private investors on the other hand. In each attraction location, five groups will initially take part in this program., of these five groups: One group will deal with security, one group with accommodation, one group will deal with catering one group with tour guiding, one group with crops and fish production and one group with cultural issues.

The private sector are needed to participate in this program for provision of accommodation facilities and transportation infrastructures. Investors from in and outside the country are welcome.

communication network throughout the Rufiji tourism circuit will be ready by December, 2004 via celtel mobile phone lines.

- IMPLEMENTATION: Implemented activities so far are:
 - (i) general awareness to communities
 - (ii) identification of touristic attraction sites
 - (iii) acquisition of land for camping sits and camping sites layouts
 - (iv) improvement of village roads and paths as well as bridges leading to earmarked attractions
 - (v) government approval.

Remaining activities so far:

- (i) submission of environmental impact assessment to the respective ministry and national environment management council
- (ii) traditional Dungu Lodges preparation
- (iii) Acquisition of tents
- (iv) Licence acquisition of official inauguration
- (v) Intensive promotion

The already implemented activities have been facilitated by the following:

S/N	ACTIVITY	FACILITY
01	General awareness to communities	Mkongo - Mloka Development Association
02	Identification of touristic attraction	- Communities in the villages - Mkongo - Mloka Development Association
03	Approval of the touristic attractions by site visiting	- Tourist Development Division - Tanzania Tourist Board - Mangrove Forest Reserve Project Division - Rufiji District Council
04	Acquisition of land for camping sites and camping layout	- Village governments - Rufiji District Council
05	Improvement of village roads, paths and bridges leading to sites	- Rufiji District Council through village Transportation and Transport program and District Roads Development Program
06	Program approval by the government	- Tourist Development Division - Tanzania Division Board

The remaining activities will also be undertaken between now and December 2004. Again, Mkongo Mloka Development Association, the Rufiji District Council, Community groups, Tanzania Tourist Board and the Tourist Development Division of the Ministry of Natural Resources and Tourism and the Mangrove Forest Reserve Project Division are expected to spearhead this program up to its official inauguration day by January, 2005.

(vi) Tours and Activities

AT RUARUKE: Stay at Kiita Hill Picnic camping sites at the top of the Hills and enjoy panoramic view of the surroundings far down the hills

- Take a walking safari down to Kalemie cave explore the cave and the Kalemie earth picnic out of the cave, watch the various flora and fauna found in the area
- Take a short drive to Nangwana and Ruaruke village for history and cultural performances.

AT NYAMISATI: Stay at African Fishing hostel FPCT hostel or camping sites outside the village at Kisiwani.

- Take a boat safari for a full day tour of the surround Islands. Enroute enjoy traveling through the mangrove forest reserve streets on the horobanian tributary, the spectacular tributary canals of the night Rufiji River, the hippos, fishing villages rice farms naturally irrigated by the sea water bi-month.
- Enjoy the lecture on various species of mangrove trees and their uses. The various programs on mangrove conservation and the community substitution on the conservation efforts.
- Take a walking safari to Nyamisati village for talk with the Natives and culture performances.

AT SIMBAULANGA ISLAND

- Stay at Picnic Palm Beach and enjoy ocean view.
- Take evening waling safaris over the beautiful and drink coconut palm fruits with to calmly fried fish
- Take a boat drive to the sunk "MV Shomari near Salale. Reroute possibly enjoy dolphins viewing

AT DIMA ISLAND

- Stay at Dima Picnic camping sites,
- Take walking safaris over the beautiful sandy beaches. Enjoy dolphins viewing white on the beach
- Take a boat ride to Kimbanju Fishing Centre and enjoy yourself
- Take a boat ride to Mbwera for view of the Remnants of Germany gunners during world ward
- Take a boat ride to Kiasi and Kyechuru for talk with the Natives and get etcher of conservation efforts by the Community and then enjoy traditional cultural performances.
- Take a long boat trip to Mafia Island and enjoy the sea mysterious.

AT IKWIRIRI

- Stay at Umwe camping sites on the banks of lake umwe guest houses in town take a short drive to Ngumbununi forest reserve and the great Mkapa Bridge. Then decide where to go or what to do after

AT NYAMWAGE:

Stay at Ndengu guesthouse or Lubinda forest reserve camping sties. Take a short drive to Lubinda forest reserve and the flora and farina found there. Enjoy the flowing water streams and wildlife viewing or photographing. Then decide where to go or what to after.

AT UTETE

- Stay at Rufiji District Council hostel extra, kingupira guesthouses or at Lugongwe hill community camping sites and Dungu Lodges.
- Take a walking safari to Nyakubera hot spring and then to the old Germany Boma for talks with the District Commissioner
- For Utete take a long drive by 4WD motor vehicle to either Libala, Kitondore and Lake Utunge hunting camps in south Ngorongo WMA - CBC or to Kiginge, Makindu and Mpanga hunting camps in south Mwaseni WMA -CBC or to Ngarambe WMA and Kichi Hills - hunting camps.
- The visit the vibrating stones near Utunge and Kiimbwa Nganywamasi new Mchanga mweupe and don't tell anybody what you see there.

AT SOUTH MWASEM & NGORONGO WMA-CBC

- Stay at hunting camping sites using portable tents make camp fire and take a short drive during the night and talk to the lions of Libala and elephants of Mpanga. One can hunt during the day if you have the permit,
- Have lunch at lake Utunge hunting camps and enjoy watching hippos, crocodiles and
- Take a boat ride and spot fish in the lake

AT NORTH MWASENI & NGORONGO WMAs-CBC

- Stay at hunting camping sites using portable tents make camp fire and take a short drive during the night and enjoy the giraffes, buffalos, elephants and antelopes you can hunt during the day if you have permit.
- Take lunch at lake Tumbi, Lake Mtanza, Msigani, Kongo or Kihimbwa camping sites.
- Take a boat ride and spot fish in lake Zumbi, lake Mtanza or the mighty river Rufiji
- Take a short drive to Nyaminywili and Mtanza for view of the rare Red colobus monkey.
- In the night enjoy to the tune of the traditional performances at Nyaminywili, Kipo or Mloka

CONCLUSIONS

- The proposed program project is inline with the Tanzanian government policies. It is aimed at community poverty alleviation

through sustainable use and conservation of the environment and available natural resources tourism activities are anticipated catalyst and substitute economic activity that will deflect the attention of people for unplanned use of resources and the environment

- Few inputs like: 9sets of portable tents 2 motor vehicle (4WD) and 2 motorboats powered by 25 or 40HP Engines are needed.
- Further development of attractions will be taking place in the course of time once the program takes off in January 2005
- The community is legally aviating for the take-off- and are willing to implement
- The community is sustainable and is expected to have back ward linkages to community development. It will have forward linkages to the tourism industry itself, especially ecotourism.
- The program will provide the solution between the selous conservation project and the communities in Rufiji mainland on wildlife resource use on the one HAND between the mangrove forests conservation project and the communities in the Rufiji Delta over mangrove use.

BIBLIOGRAPHY

- 1- "Unsurpassed TANZANIA" issue No. 03,2003
- 2- "Tourism policy" Ministry of Natural Resources and Tourism
- 3- Trantravel, (Authetic Africa): vol x 1, No 31 2nd quarter 2004
- 4- THE PROPOSED RUFIFI RURAL TOURISM, PROGRAM (program design and the need for capacity building, 2003
- 5- SITE VISIT REPORT OR RUFIFI ECOTOURISM; tourist development division, 2002
- 6- SITE VISIT REPORT ON RUFIFI ECOTOURISM; Tanzania Tourism Board, 2002
- 7- INTRODUCTION AND BACKGROUND TO THE CONSULTING; RUFIFI ENVIROMENT MANAGEMENT PROJECT (REMP-PP14)
- 8- WILDLIFE POLICY", MINISTRY OF NATURAL REASORCES AND TOURISM.